



University life: Update and live Q&A



Post your question in the Q&A pop up!

Student Satisfaction



81% student satisfaction

**6th in Scotland
21st in the UK**

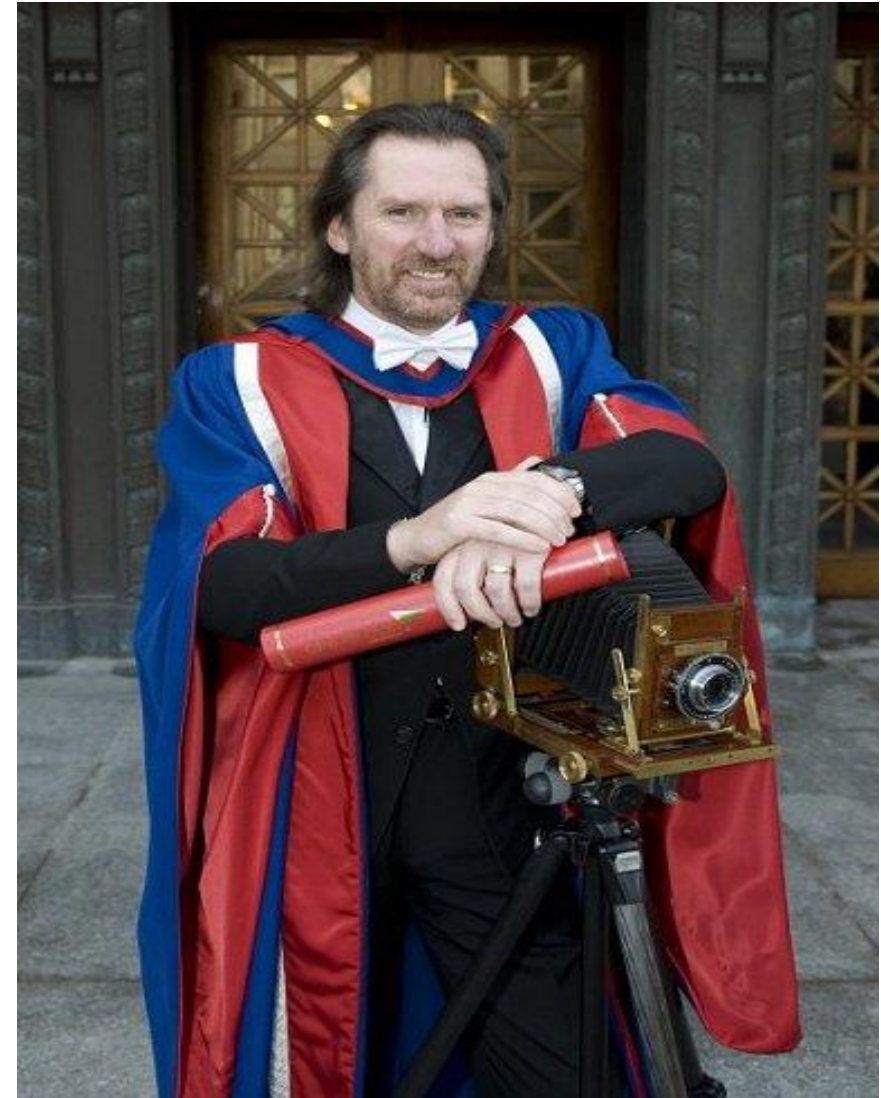


Celebrating: #NapierNames



Our new Chancellor

Edinburgh Napier
UNIVERSITY



Student admissions & recruitment

- On track, 105% of target (UG 'home' places)
- 'Clearing', c. 250 students recruited
- RUK & RoI students forecasting 262 (target 167)
- International intake on track (target 690)

Starting now for September 2022

- Virtual Open Day, 18th September
- On-campus open day, 30th October
- Schools and Colleges outreach work



Plans for Trimester 1

- Beyond level 0 guidance for Higher Education

PUBLICATION - ADVICE AND GUIDANCE

Coronavirus (COVID-19):
universities, colleges and
community learning and
development providers

Published: **10 Aug 2021**

Last updated: **10 Aug 2021** - [see all updates](#)

Directorate: [Advanced Learning and Science Directorate](#)

Part of: [Coronavirus in Scotland, Education, Work and skills](#)

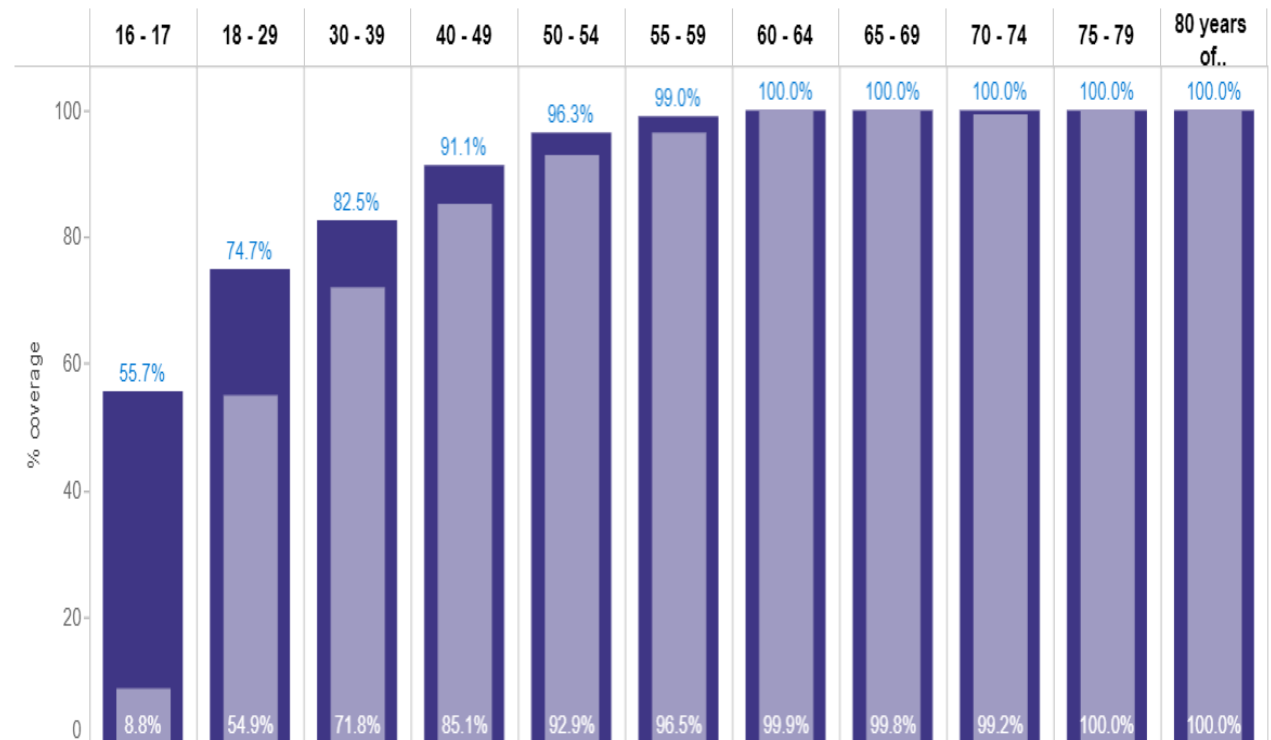
Guidance for operations in the academic year 2021 to 2022.

We are going 'above & beyond' the legislation

Our plans & adaptations

- Vaccinations
 - sustained comms
 - signposting and facilities
- Testing, LFD Collect
- Outbreak response plan
 - tested

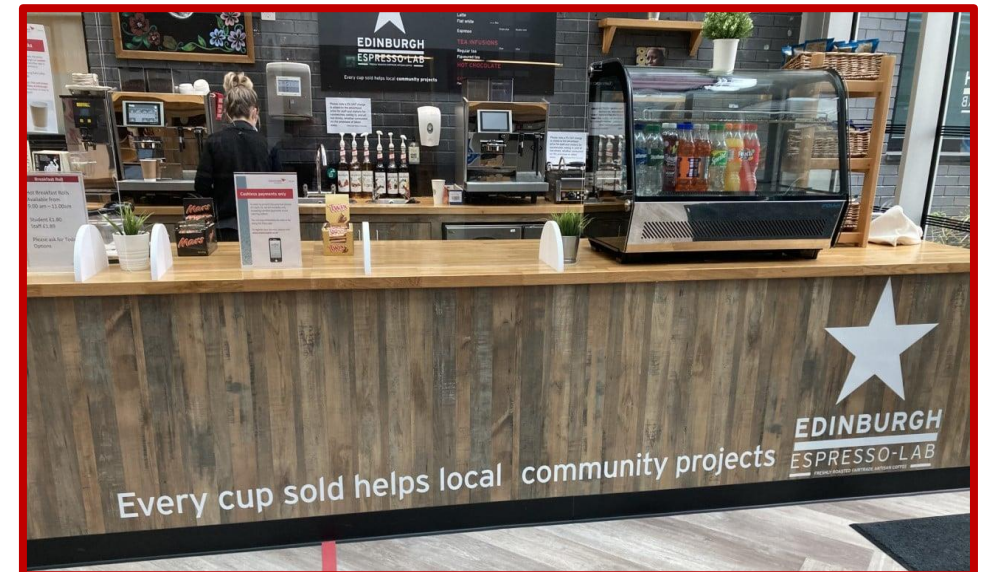
Total % coverage by age group in Scotland



Age group breakdowns use the age of the individual as at 31 August 2021. Denominator populations for age/sex groups and area breakdowns are sourced from National Records of Scotland mid-2020 estimates (the latest available).

Campus adaptations

- Spacing, 1m; 'keep your distance'
- 'Student check-in' all classes; visitors sign in
- Sanitisers in teaching spaces & communal areas
- Face-coverings
 - moving about & in communal areas
 - can remove when seated (1m distanced)
- Ventilation checks done
- Catering
 - walk-in outlets restored
 - expanded opening hours
 - new menus



Campus Life: our adaptations

Learning & Teaching

- Committed to increased in person teaching
- Caps remain on student numbers in rooms
- Additional spaces & technology
- 1m reconfiguration complete

Research

- progressing well



Campus Life

Staff

- LM Briefings, FAQs/guidance
- Regular bulletins, FAQs, RCL intranet page, H&S pages
- Local risk assessments,
- Managed laptops, hot desking

Students

- International students, advice & guidance, hardship fund
- 'Super September' (ENSA)
- Residences support
- In-person graduations
- Comms - myNapier, newsletters, social media



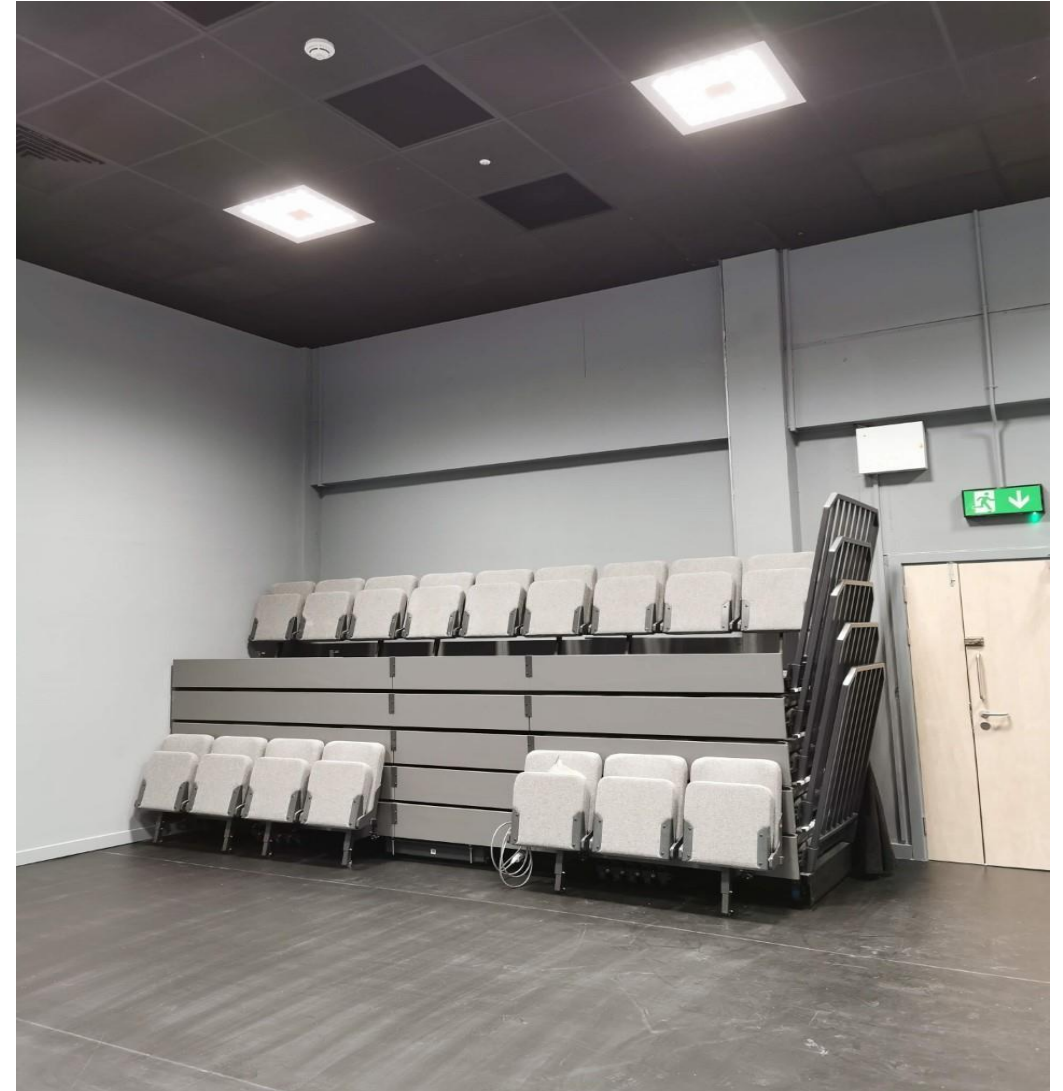
Student residences



- High demand
- Comms
 - testing kits
 - vaccinations
 - distancing
 - safe behaviours
- Support for isolating

Looking forward: 2021/22 ...

- Planning for Trimester 2
- Working practices for the future
- Delivering our annual plan commitments



& Beyond: sharing ambition



Lots more to know and talk about

THE world rankings,
500 - 600

Bright Red Sparks winners -
innovative products & services

Turing funding for student
mobility

New research
centres

Staff recruitment

Staff awards & achievements

SFC review of Tertiary Education

Our financial performance & investment plans

Estate developments ...

Becoming a top 5 modern University ...

Join me in October



Post your question in the Q&A pop up!