



# SPSS 26 INSTALLATION AND AUTHORISATION

## SOFTWARE LOAN AGREEMENT

By installing SPSS on your own equipment, you agree to be bound by the following conditions:

1. One copy only of the software will be made onto the hard disk of my own device.
2. I will not download the software on behalf of anyone else.
3. The software will be used only for work purposes or for work directly relevant to my course and only for the duration of my course.
4. The software will not be used for commercial gain by myself or any third party.
5. If I cease to be a member of staff or student at the University, I will completely remove the software from my own device.

## SYSTEM REQUIREMENTS

The minimum hardware and software requirements for IBM® SPSS® Statistics are as follows:

### Operating System

- Windows: Windows 10 64bit
- Mac: Apple Macintosh operating system.

### Configuration

- Intel or AMD processor running at 1 gigahertz (GHz) or higher.
- 4 gigabytes (GB) of RAM or more.
- 4 gigabytes (GB) of available hard-disk space. If you install more than one help language, each additional language requires 60-70 MB of disk space.
- XGA (1024x768) or a higher-resolution monitor.
- For connecting with IBM® SPSS® Authorisation Server, a network adapter running the TCP/IP network protocol.

## INTRODUCTION

This guide explains how to install SPSS on to your device. The current license code is available on the [Software Download site](#).

If you already have SPSS installed and the license has expired, then you should:

- Start the **IBM SPSS Statistics 26 License Authorization Wizard** from your **Start menu**.
- Follow the instructions below, from step 18 to 21 to renew the license.

# SPSS INSTALLATION INSTRUCTIONS

1. Go to the **Software Download Service**: <http://softwaredownloads.napier.ac.uk> and **log in** using your University login and password:



Sign in with your University login and password

LOGIN  
User Name

PASSWORD  
Credentials

Sign in

The Software Download system will open:

Home > Software Downloads

Welcome to the Software Downloads service!

You can download a range of **free software** provided by the University however before you start, you must read the [Software Loan Agreement](#) and check the box to confirm that you have done so:

- **Guidance** for installing the software (where available) can be found in the Description field.
- Information Services **cannot guarantee that all software will be compatible** with your own equipment and the installation of any software made available to you by the University is carried out at your own risk.
- Information Services **cannot take responsibility for any loss or damage** caused by the reconfiguration of your equipment.

In order to enable the download link you must confirm that you agree to the [Software Loan Agreement](#).

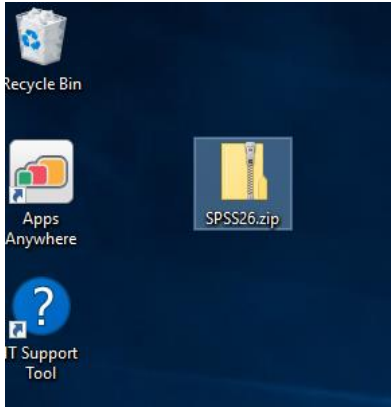
Title	Description	Platform	Size	link
McAfee Virus Scan 8.8	Before you download the software, view the Installation Guide.	Windows	129.58 Mb	<a href="#">Download</a>
Nvivo (32 bit)	Installer for Nvivo 32 bit version This version removes the reliance on QuickTime, which has a security issue	Windows	419.51 Mb	<a href="#">Download</a>
Nvivo (64 Bit)	Installer for Nvivo 64 bit version This version removes the reliance	Windows	397.19 Mb	<a href="#">Download</a>

2. Before you download the software you must **read the Software Loan Agreement** and **check the box** to confirm that you have done so:

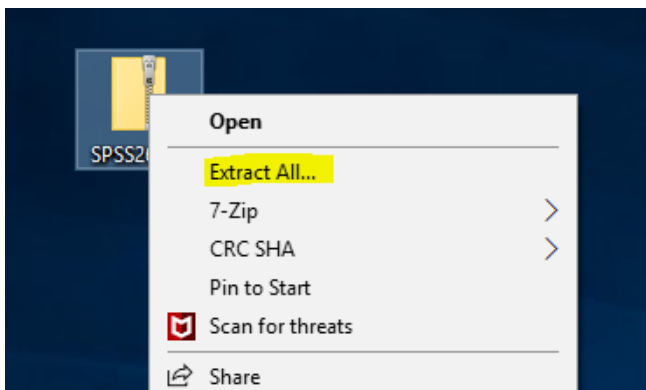
In order to enable the download link you must confirm that you agree to the [Software Loan Agreement](#).

3. Find the relevant version of the software using the **Next** button on the bottom right to navigate through the pages if required.
4. Click on the **Download** link to download the software.

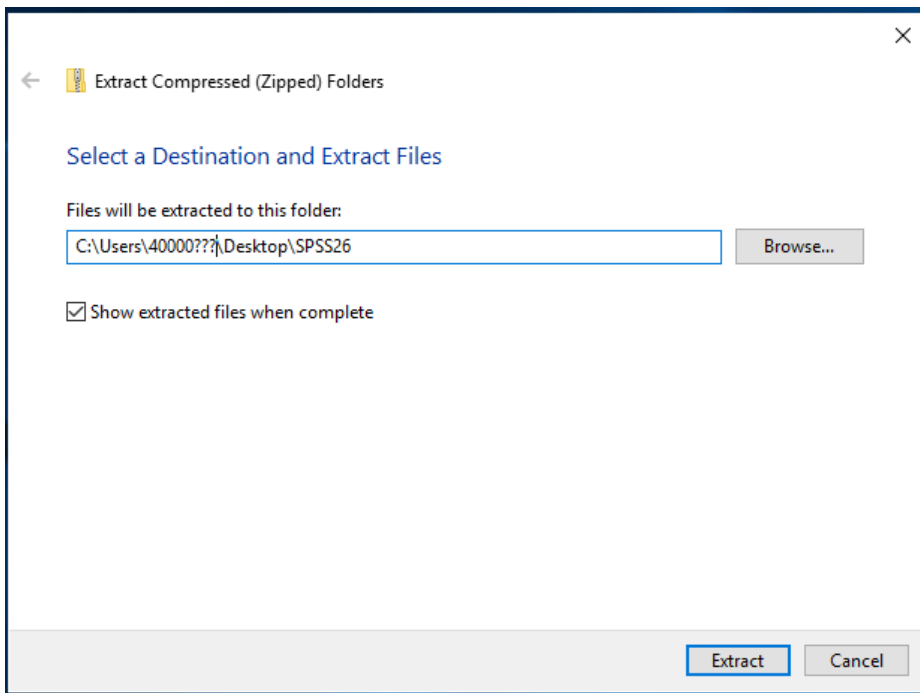
5. Click **Open**, the software will download, which may take a few minutes.
6. When prompted, save the **SPSS26.zip** file to your desktop.



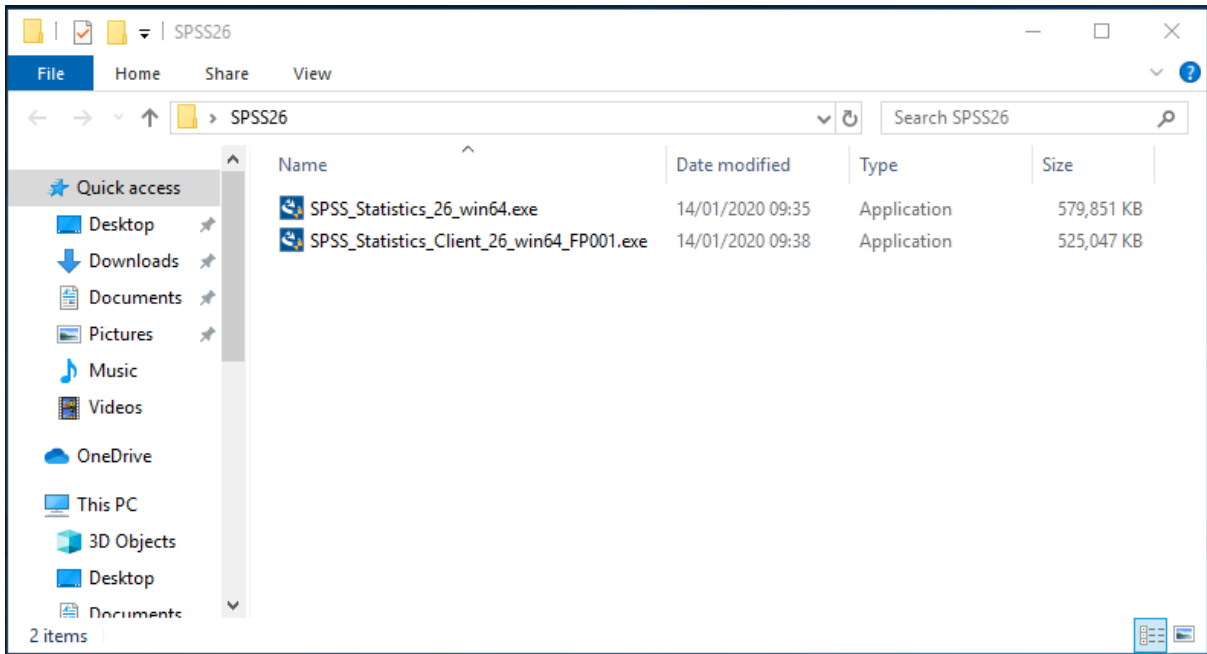
7. Right click the file and choose **Extract All**:



8. Allow it to save to a **folder on your desktop**, click **Extract**:

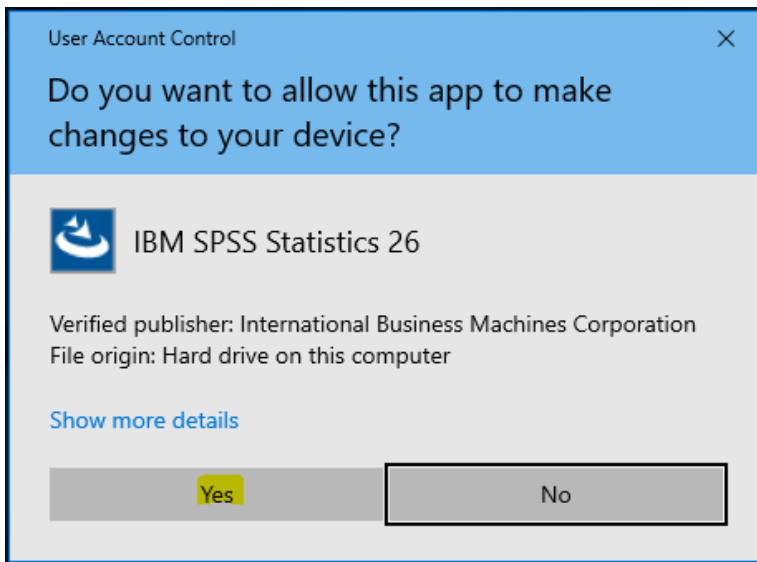


9. After it has unzipped the files, you can **delete** the file SPSS26.zip
10. Navigate to the **folder on your desktop** that was created by the unzip process. You should see two SPSS 26 files:

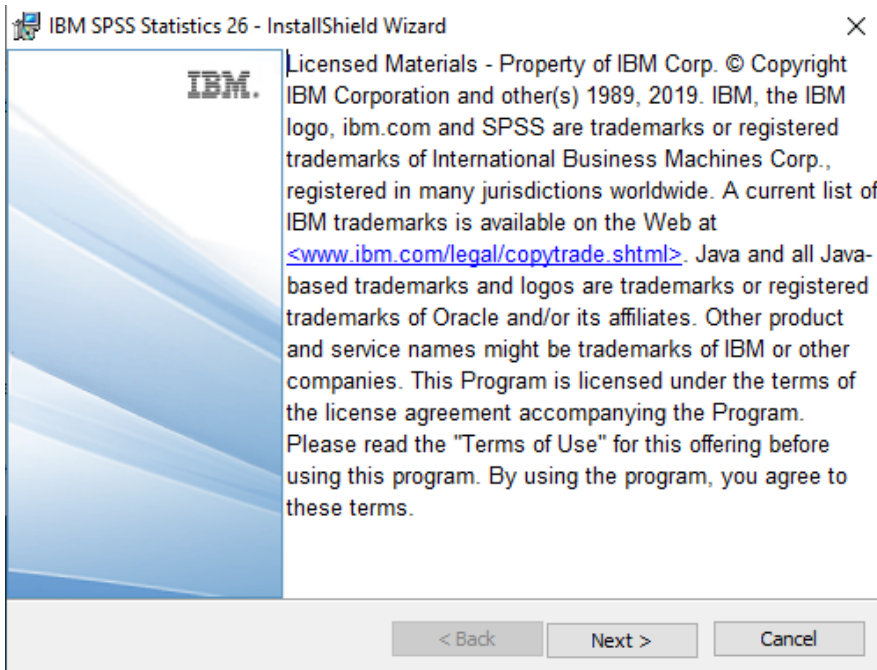


These are the files you will need to install and patch SPSS 26.

11. Double click the file **SPSS\_Statistics\_26\_win64.exe** to start installing SPSS 26.
12. If you see the following screen, select **Yes**.

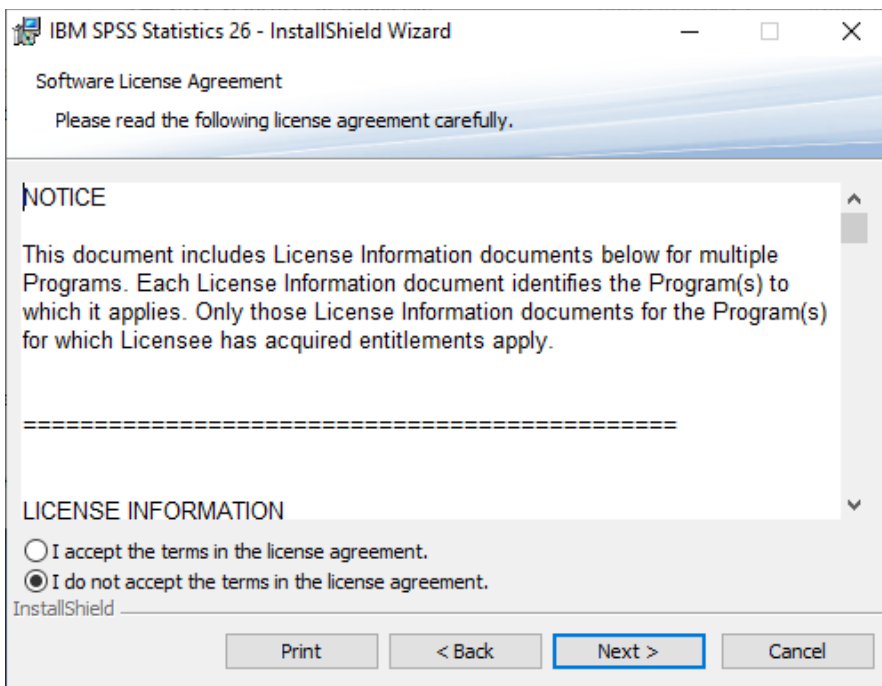


Installation will start.

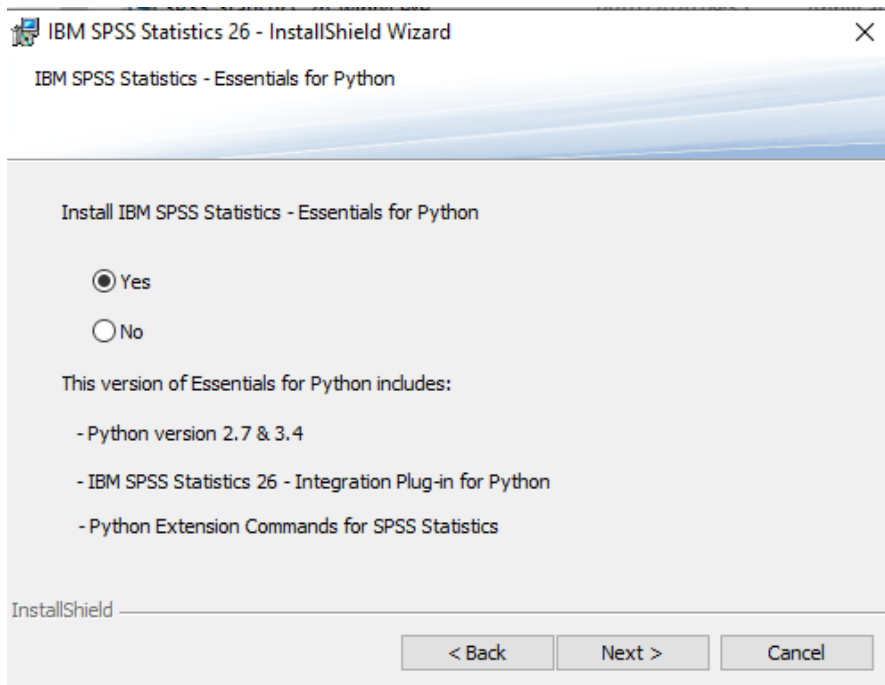


13. Click **Next**.

14. Read through the Software License Agreement. If you accept the terms, click the **Accept** radio button and click **Next**.

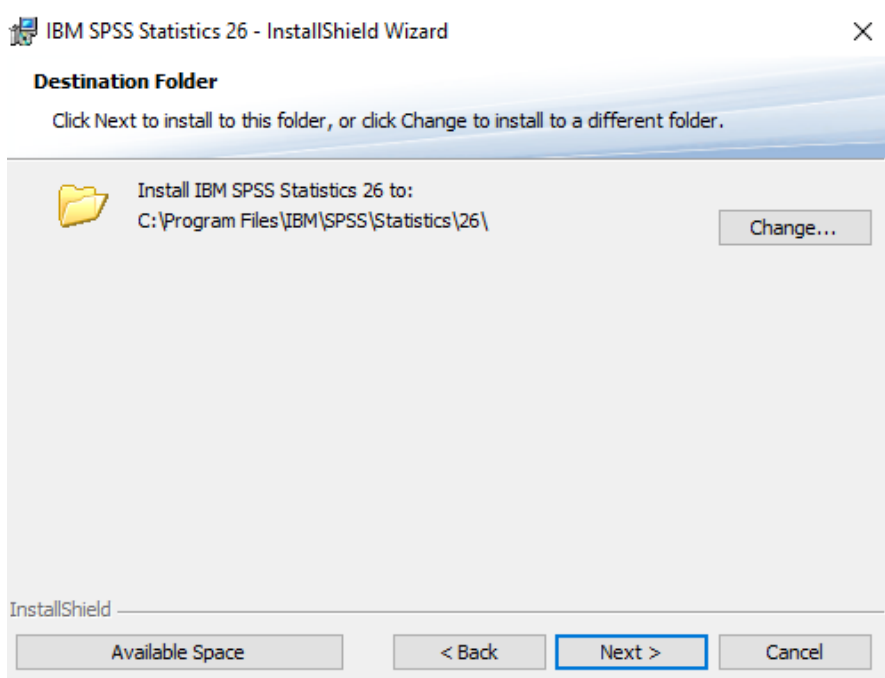


15. If required, allow **Essentials for Python** to be installed:

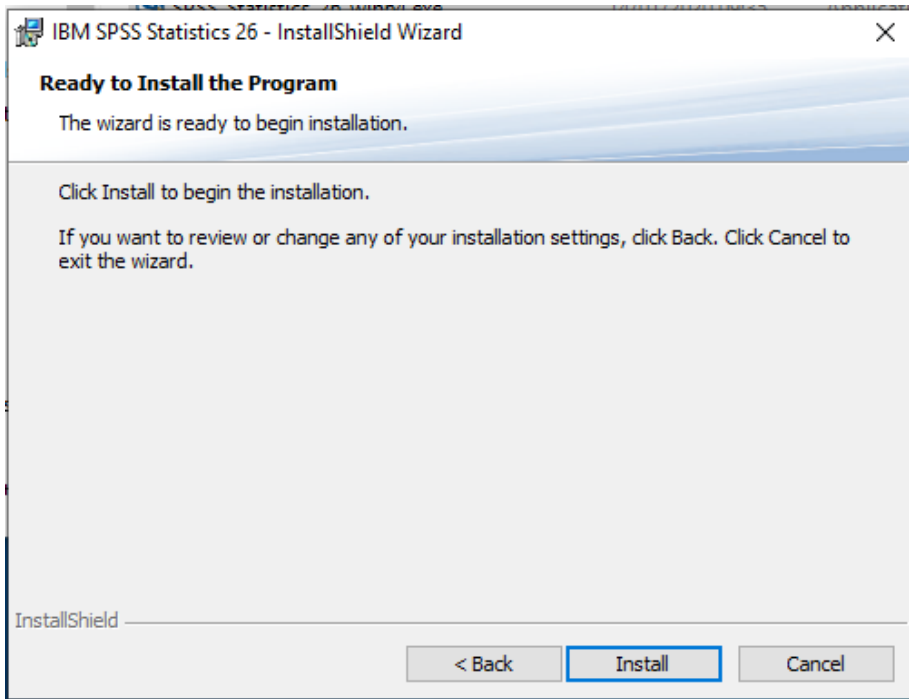


16. If you elected to install Python, review the license agreement, and **accept** it.

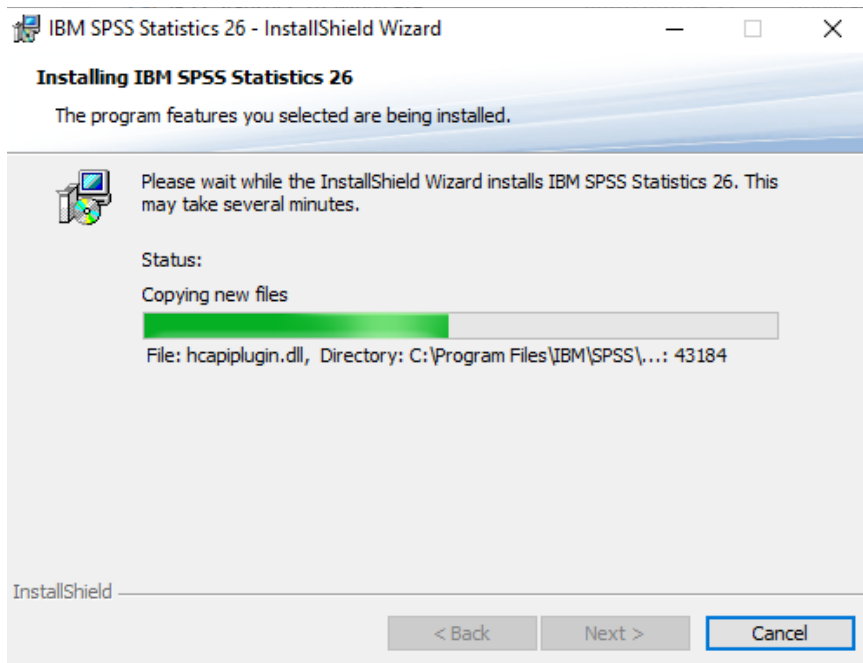
17. Tell the installer where to install SPSS 26 (usually the **default**):



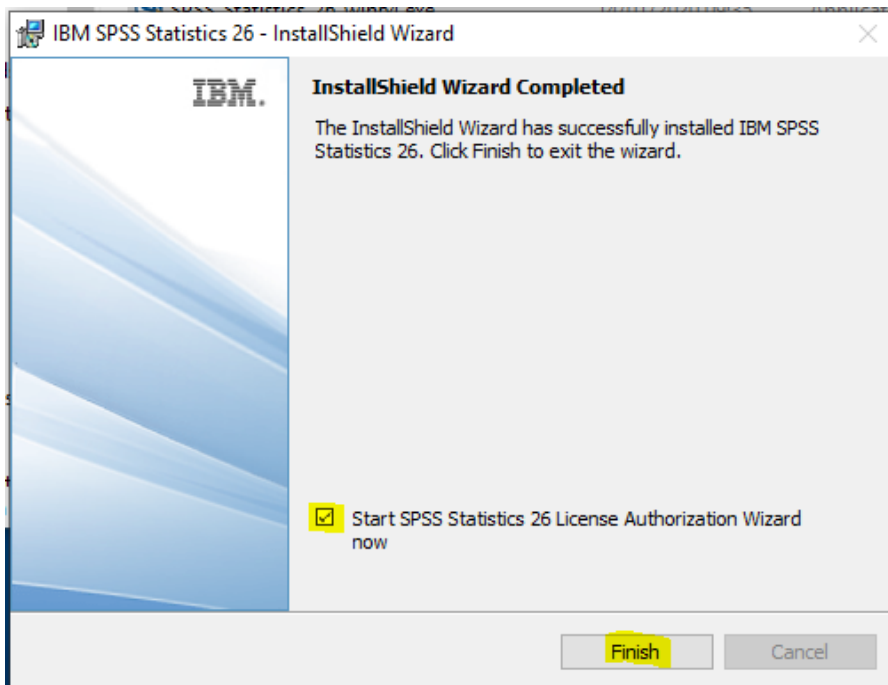
18. Click **Install** to begin:



The installer will start:

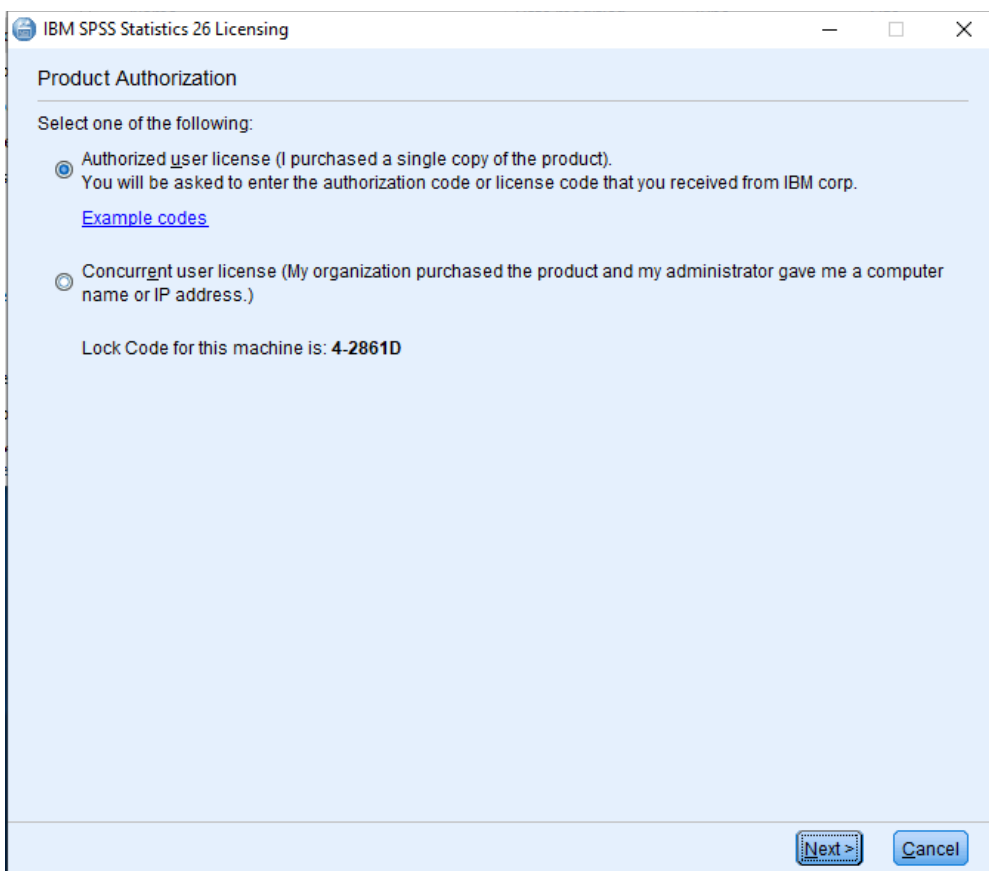


When complete you will see the following screen:



19. Ensure the box is ticked to Start the SPSS Statistics 26 Authorisation wizard, and click **Finish**.

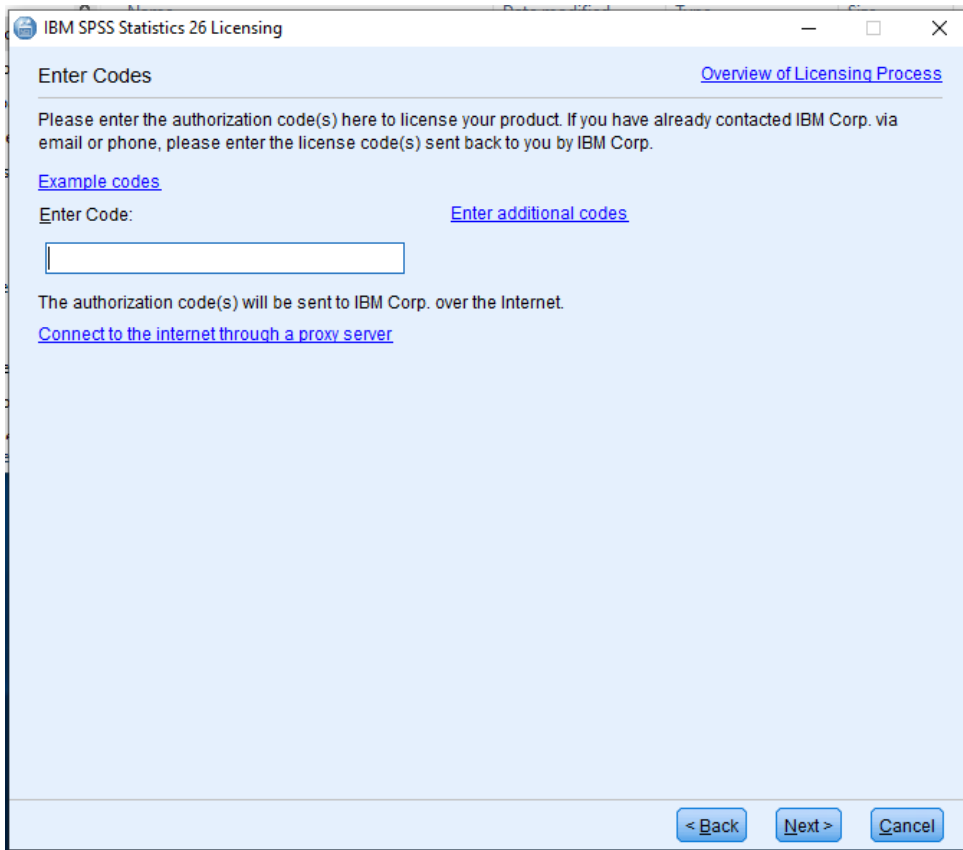
You will be presented with the following screen:



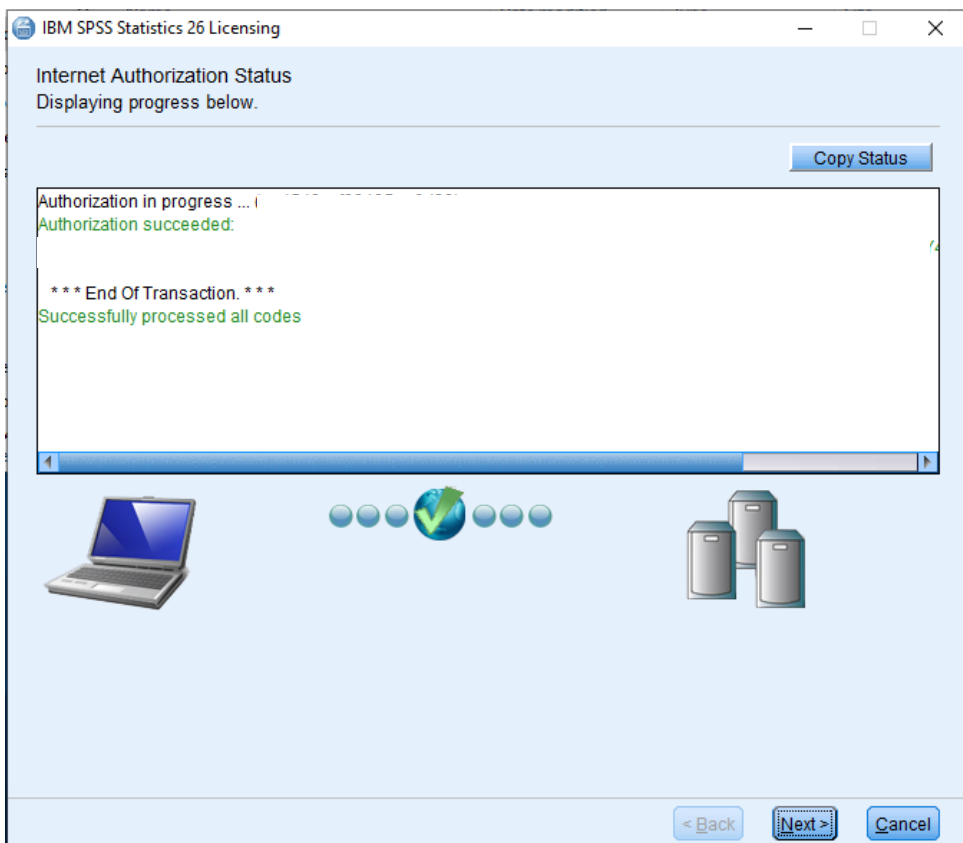
20. Ensure **Authorized user license** is ticked and select **Next**.

21. On the next screen, enter the code which you will find on the [Software Download site](#) and click **Next**.





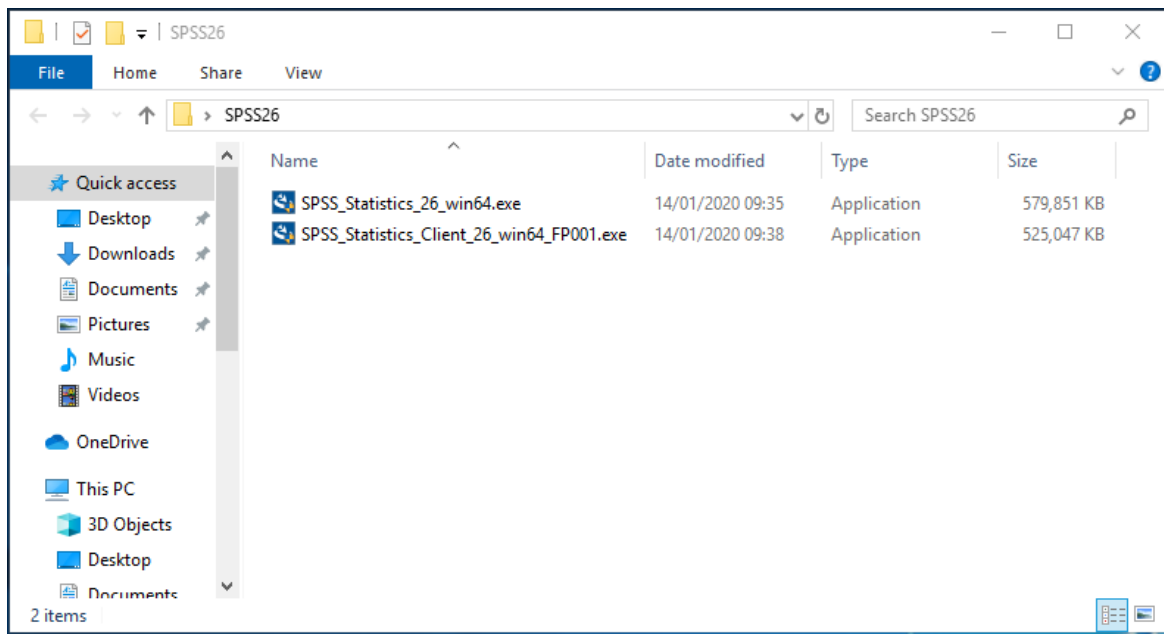
You will see the following screen:



22. Click **Next**.
23. Click **Finish** on the next screen.

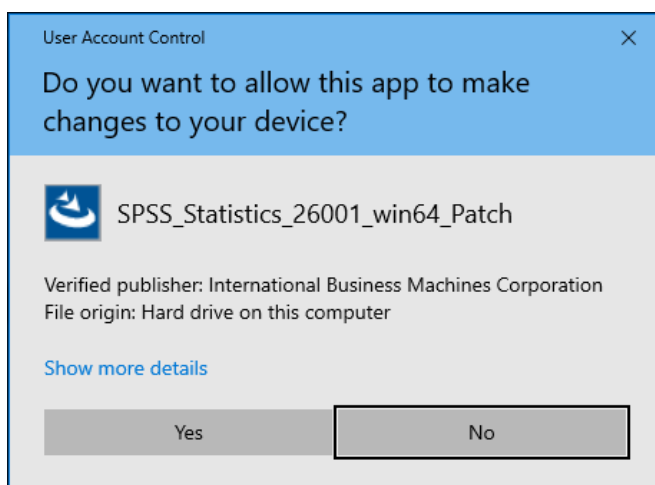
SPSS 26 is installed. Next, you must apply the patch.

24. Go back to the **Unzip window** :



25. Double click the file **SPSS\_Statistics\_Client\_26\_win64\_FP001.exe**

26. When you see the following screen, select **Yes**.



27. Click **Next** to start, accept the license agreement, and the patch will install.

28. You may be required to reboot your PC, in which case, save any work, and **reboot**.