



SPSS Amos - Installation Guidelines

SOFTWARE LOAN AGREEMENT

By installing SPSS on your own equipment, you agree to be bound by the following conditions:

1. One copy only of the software will be made onto the hard disk of my own device.
2. I will not download the software on behalf of anyone else.
3. The software will be used only for work purposes or for work directly relevant to my course and only for the duration of my course.
4. The software will not be used for commercial gain by myself or any third party.
5. If I cease to be a member of staff or student at the University, I will completely remove the software from my own device.

SYSTEM REQUIREMENTS

The minimum hardware and software requirements for IBM® SPSS® Statistics are as follows:

Operating System

- Windows: Windows 10 64bit.

Configuration

- Intel or AMD processor running at 1 gigahertz (GHz) or higher.
- 4 gigabytes (GB) of RAM or more.
- 4 gigabytes (GB) of available hard-disk space. If you install more than one help language, each additional language requires 60-70 MB of disk space.
- XGA (1024x768) or a higher-resolution monitor.
- For connecting with IBM® SPSS® Authorisation Server, a network adapter running the TCP/IP network protocol.

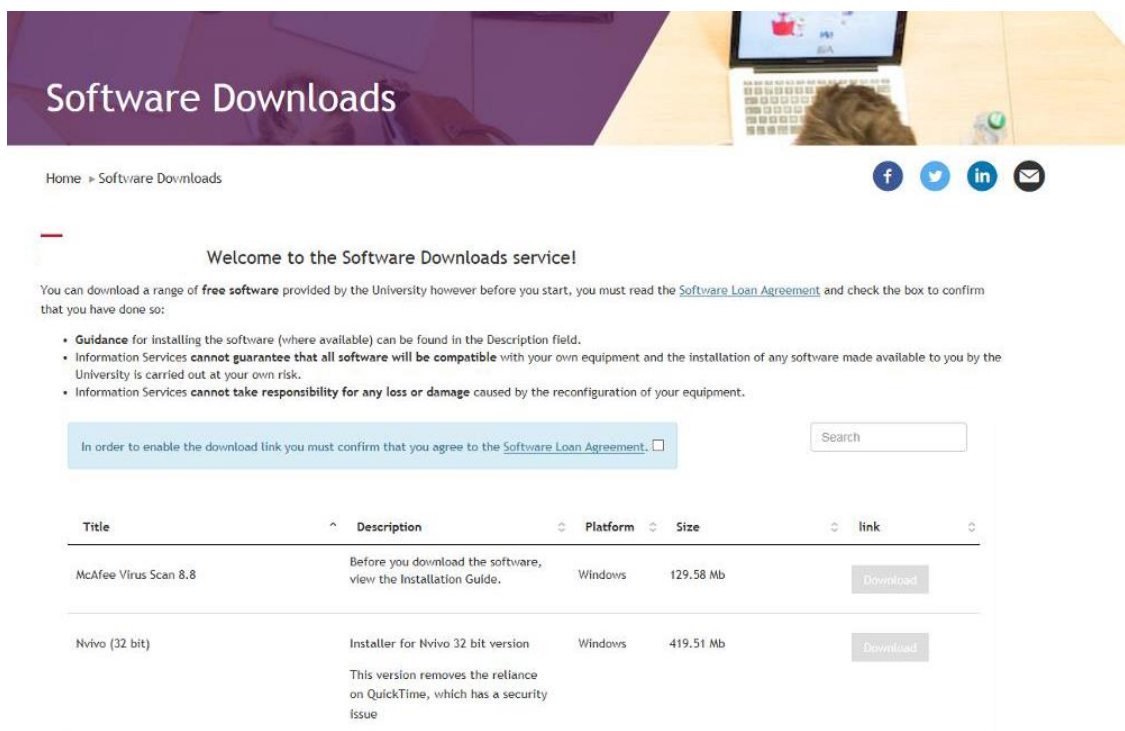
INTRODUCTION

This guide explains how to install SPSS Amos on to your device. The current license code is available on the Software Download site.

1. Go to the **Software Download Service**: <http://softwaredownloads.napier.ac.uk> and **log in** using your University login and password:



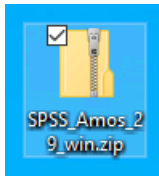
The Software Download system will open:



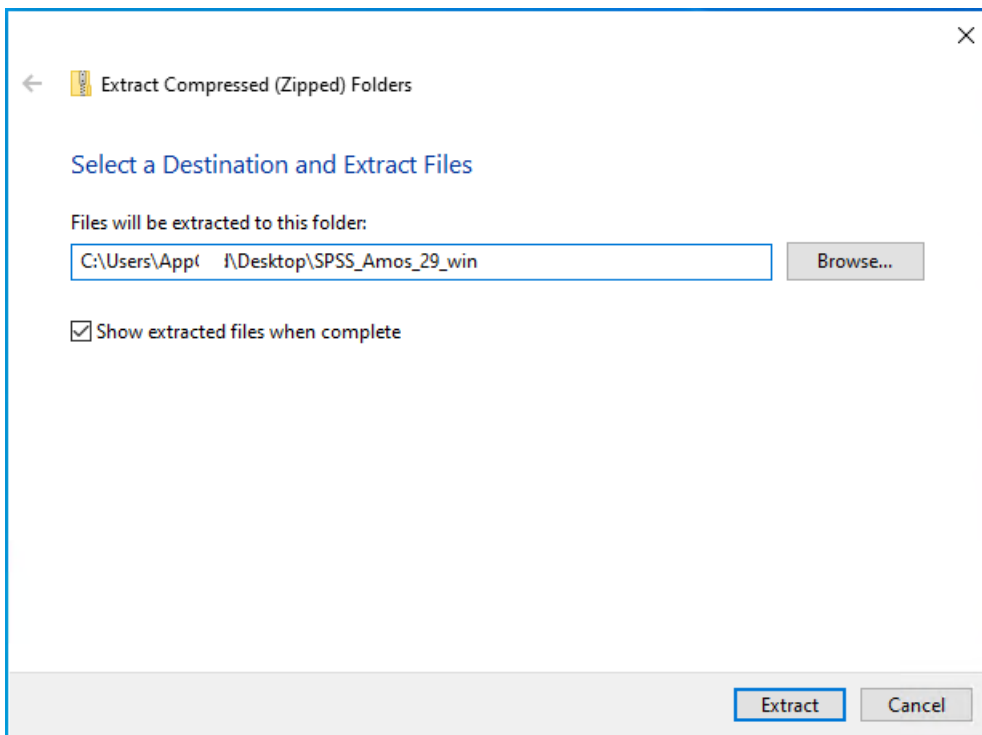
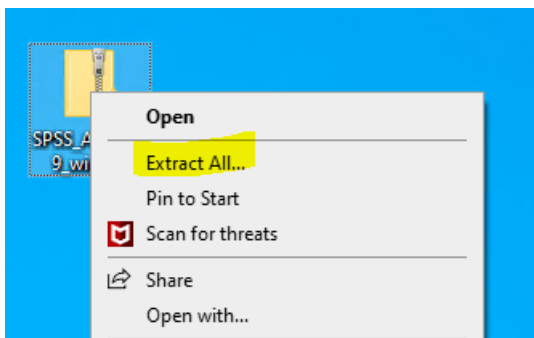
2. Before you download the software you must **read the Software Loan Agreement** and **check the box** to confirm that you have done so

In order to enable the download link you must confirm that you agree to the [Software Loan Agreement](#).

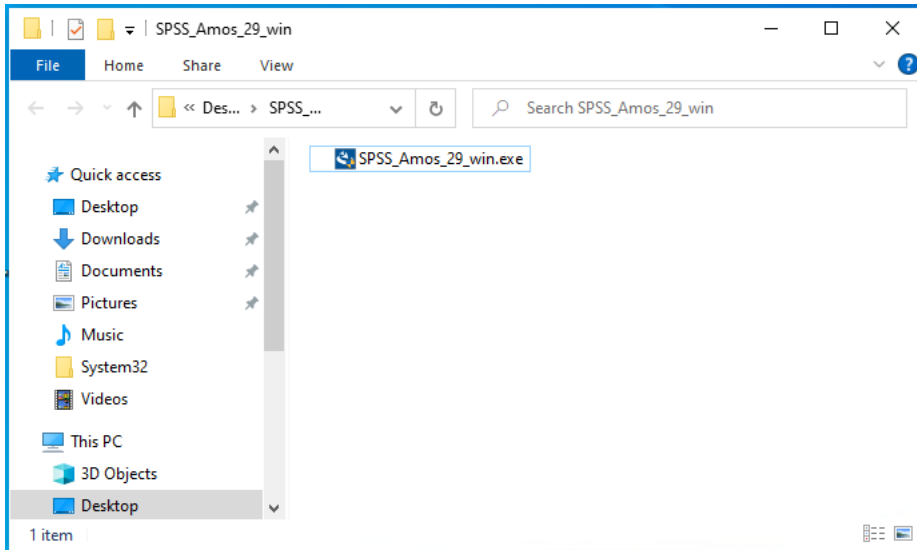
3. Find the relevant version of the software using the **Next** button on the bottom right to navigate through the pages if required.
4. Click on the **Download** link to download the software.
5. Download **SPSS_Amos_29_win.zip** to your PC



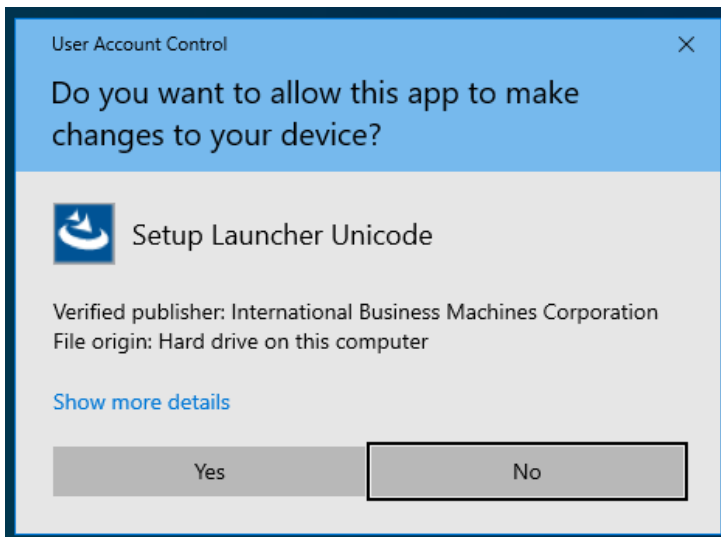
6. Right click and **Extract All**



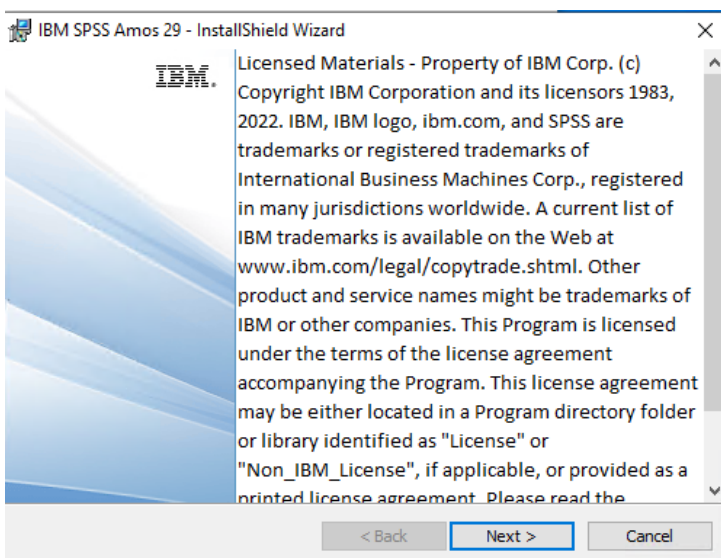
7. Run **SPSS_Amos_29_win.exe**



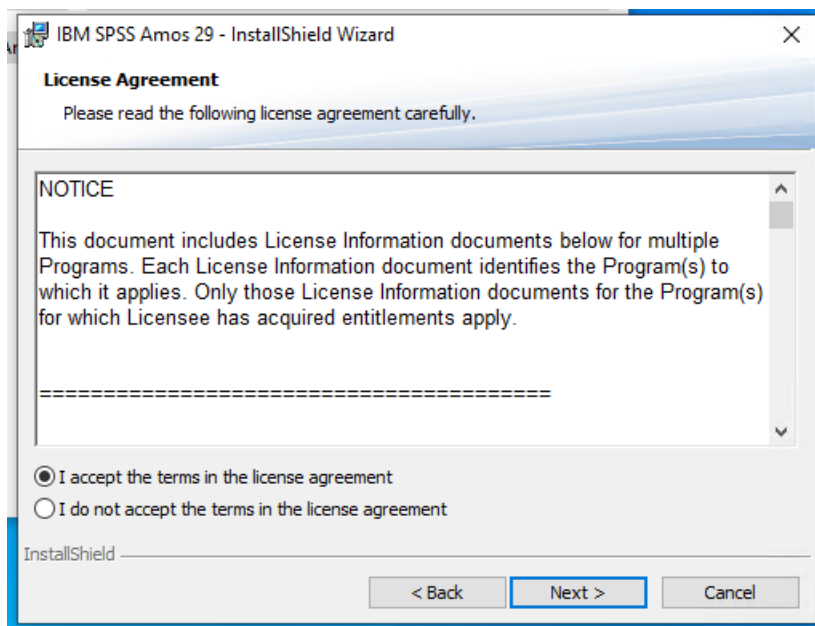
8. Click **Yes**



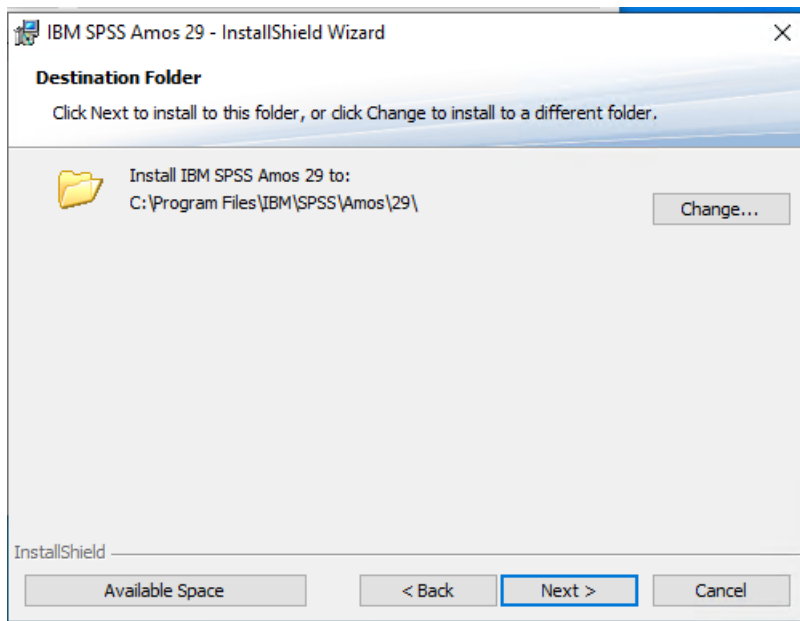
9. Click – **Next >**



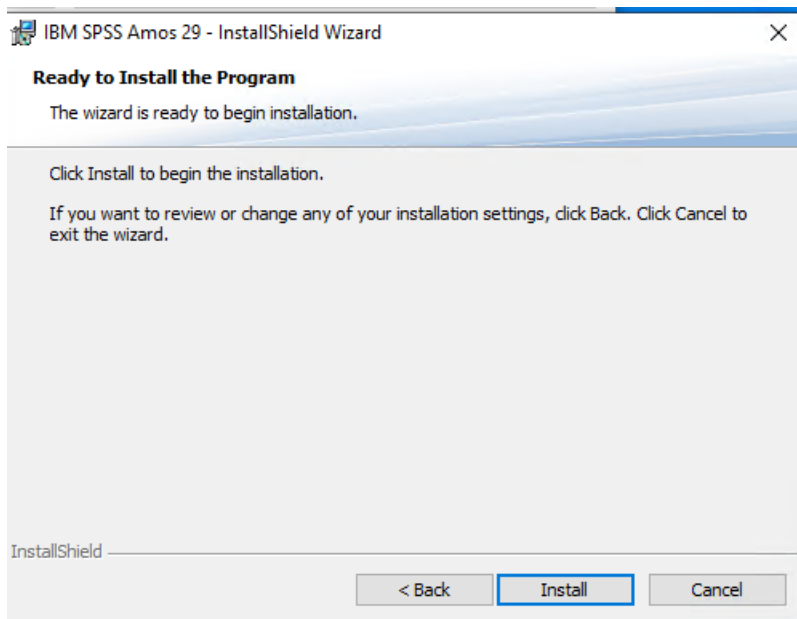
10. Agree to the License terms and click **Next >**



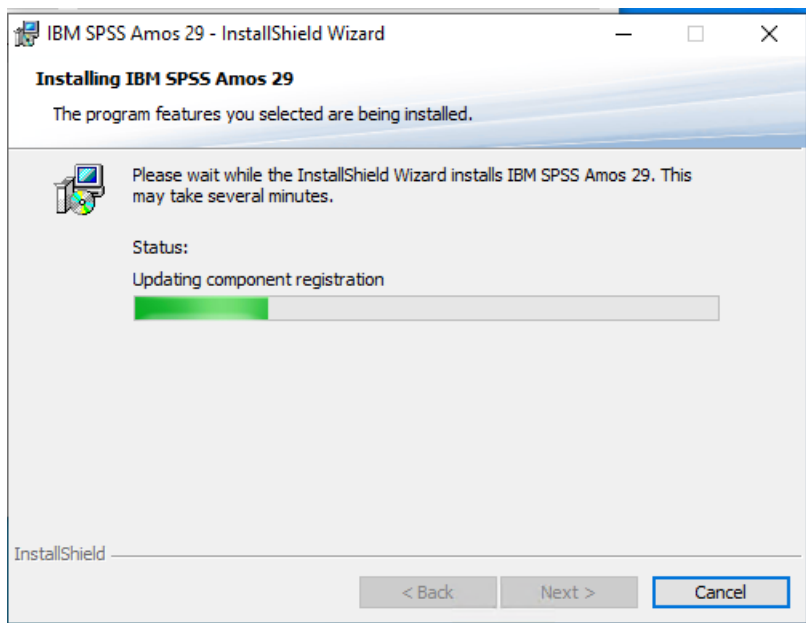
11. Destination folder – click **Next >**



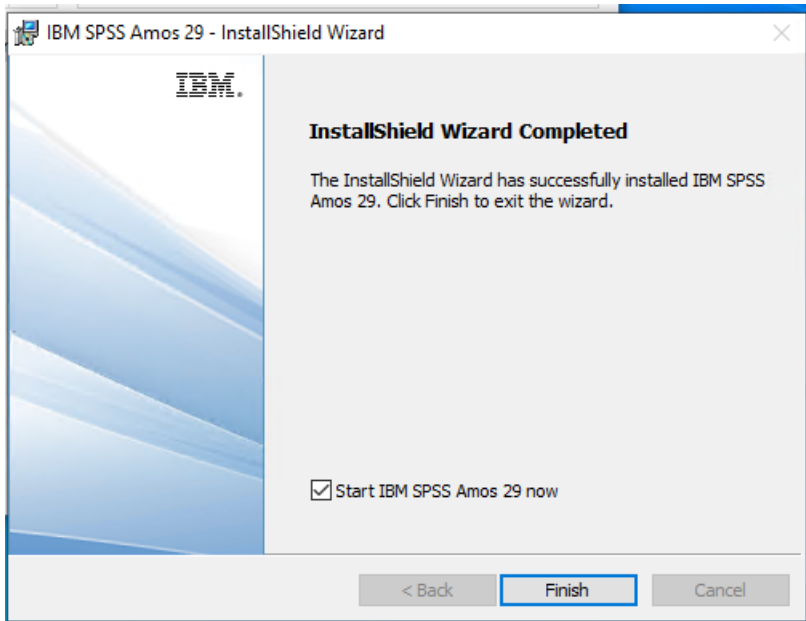
12. Click **Install:**



SPSS Amos will install.

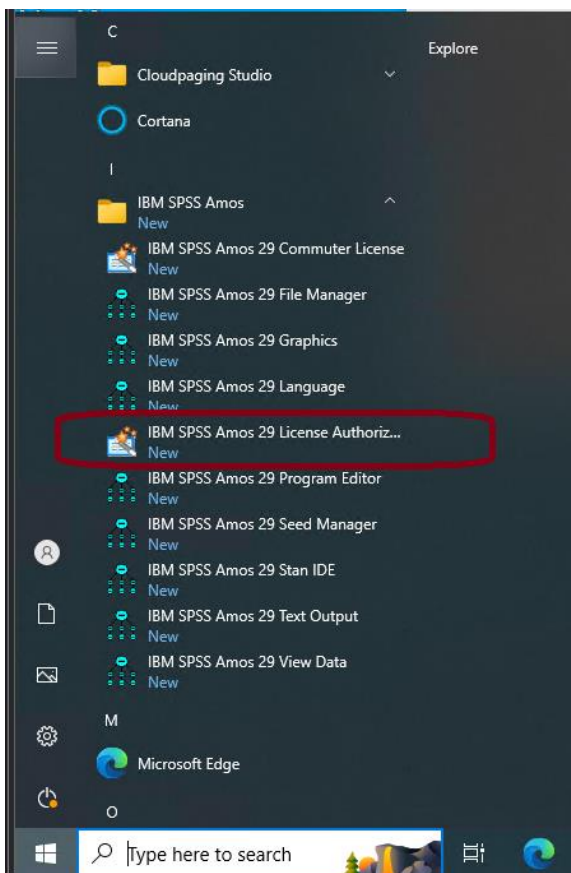


13. Click **Finish**.

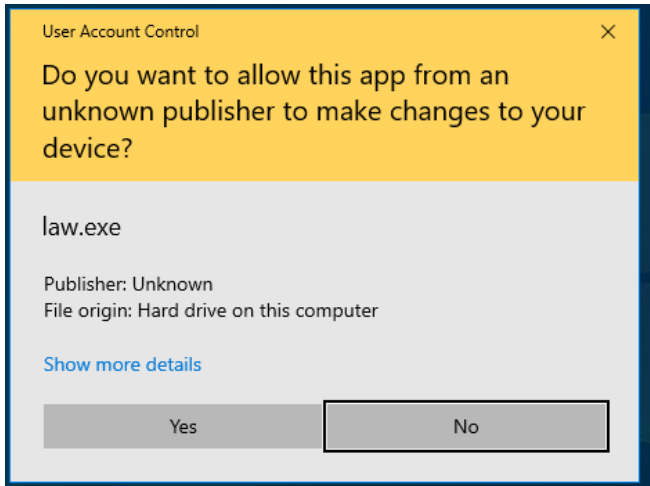


Before you use SPSS Amos, you must license the product:

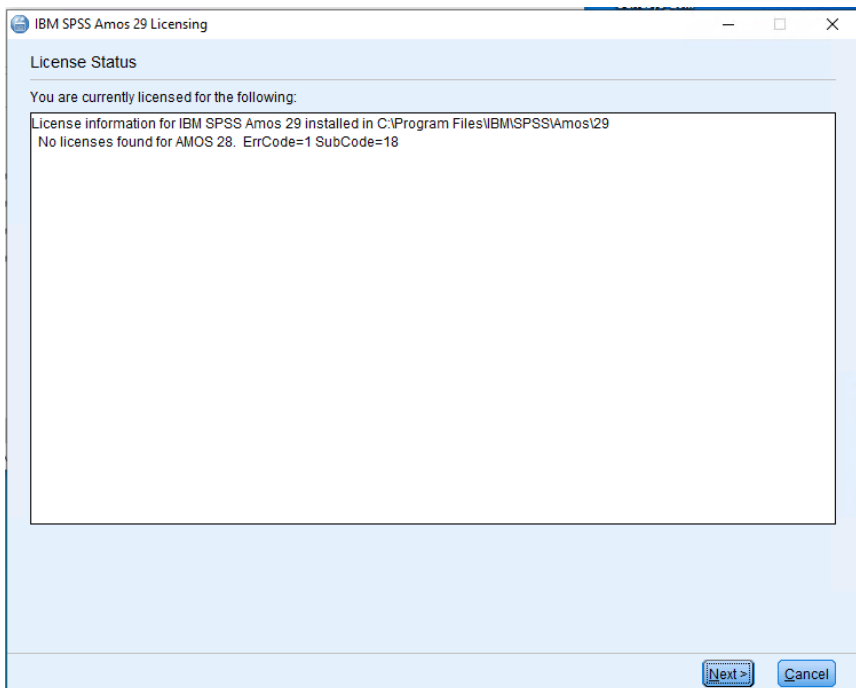
1. From the windows start menu select **IBM SPSS Amos** and **IBM Amos 29 License Authorization Wizard**:



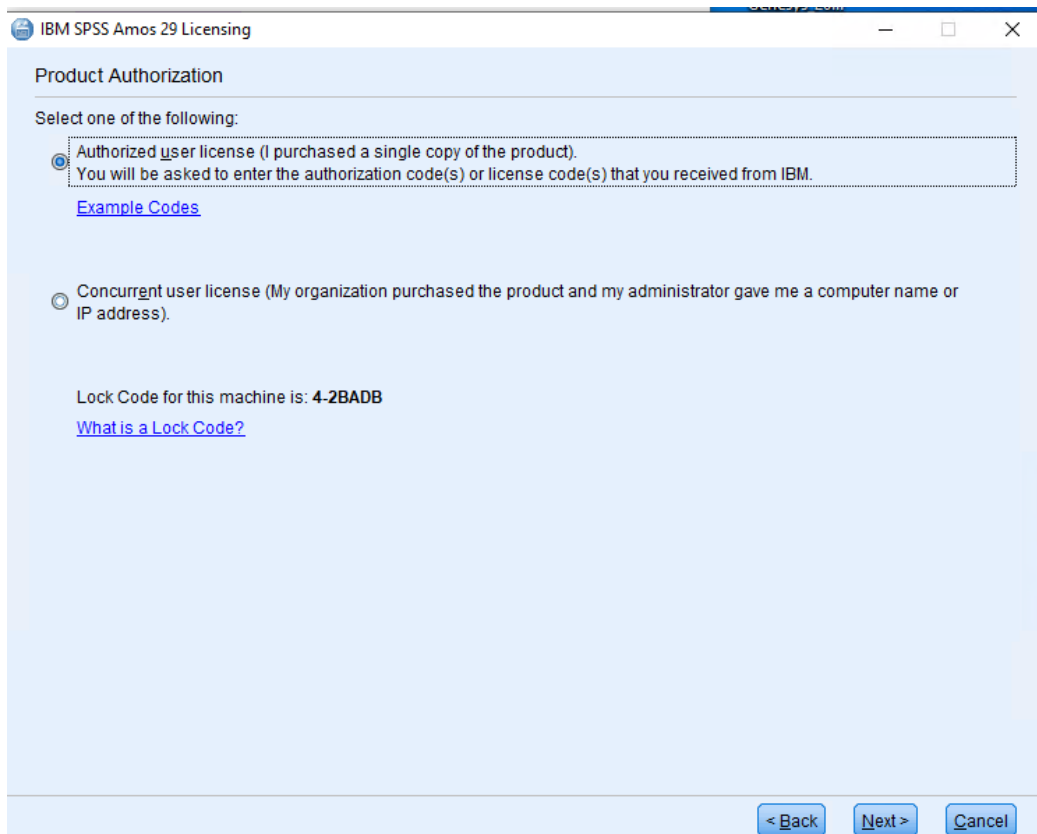
2. Click **Yes**:



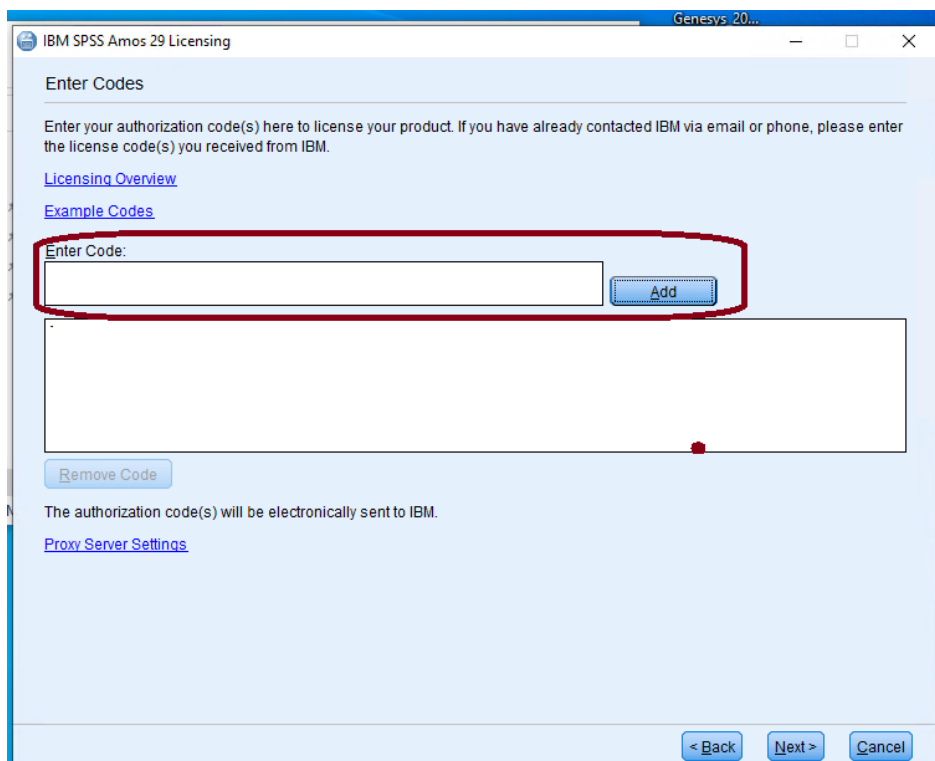
3. Click **Next**:



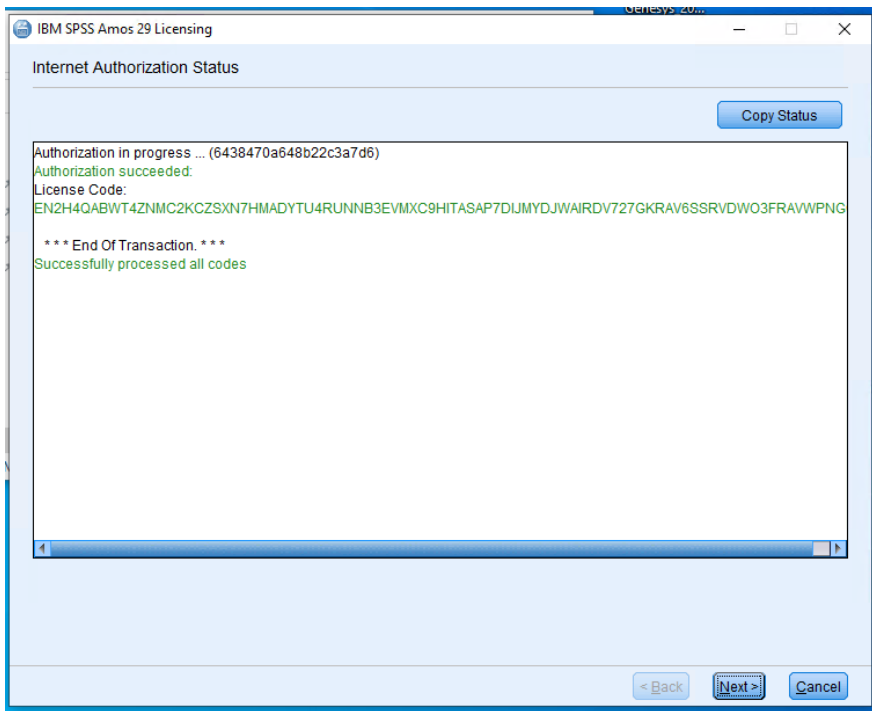
4. Select **Authorized user licence (I purchased a single copy of the product)**:



5. Enter the code published on the [Software Download Service](#) and **Add**:



6. Click **Next**:



7. Click **Finish**, then Start SPSS Amos and the product will be licensed :

