

ENhance Case Study

Edinburgh Napier
UNIVERSITY

Department of
Learning & Teaching
Enhancement

Themes presented:

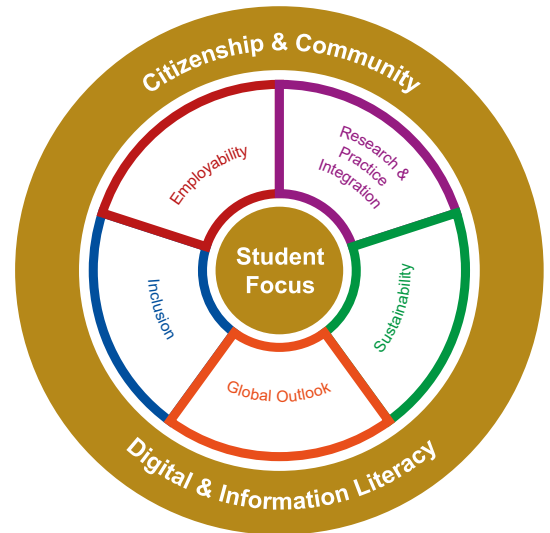
Employability; Research- and Practice Integration;
Sustainability; Inclusion

Programme

PGDE Teacher Education

Submission made by

Fiona Savage



Case Study

This case study is available as a [Video submission](#). Screen grabs of slides from this submission, annotated with theme examples, are below.

- ✓ Teacher Induction Scheme (TIS)
- ✓ Session with Student Futures to aid post-probation interviews

The diagram is identical to the one in the previous block, with 'Student Focus' at the center and segments for Employability, Research & Practice Integration, Sustainability, Global Outlook, Inclusion, Citizenship & Community, and Digital & Information Literacy.

Themes presented:

Employability; Research and Practice Integration; Sustainability; Inclusion

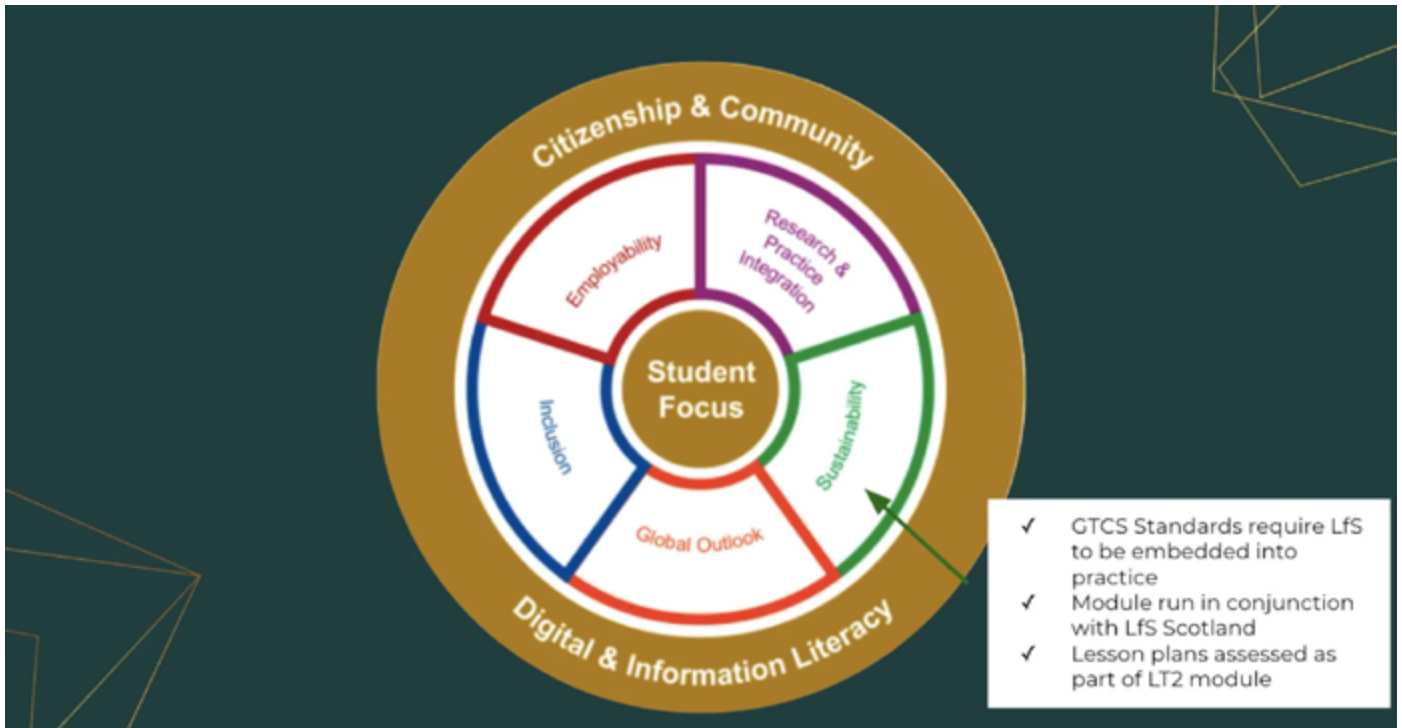
- ✓ GTCS Standards require Inclusive Practice
- ✓ Reasonable Adjustments for all lectures and seminars
- ✓ Assessed as part of the Contexts of Learning module

Video player

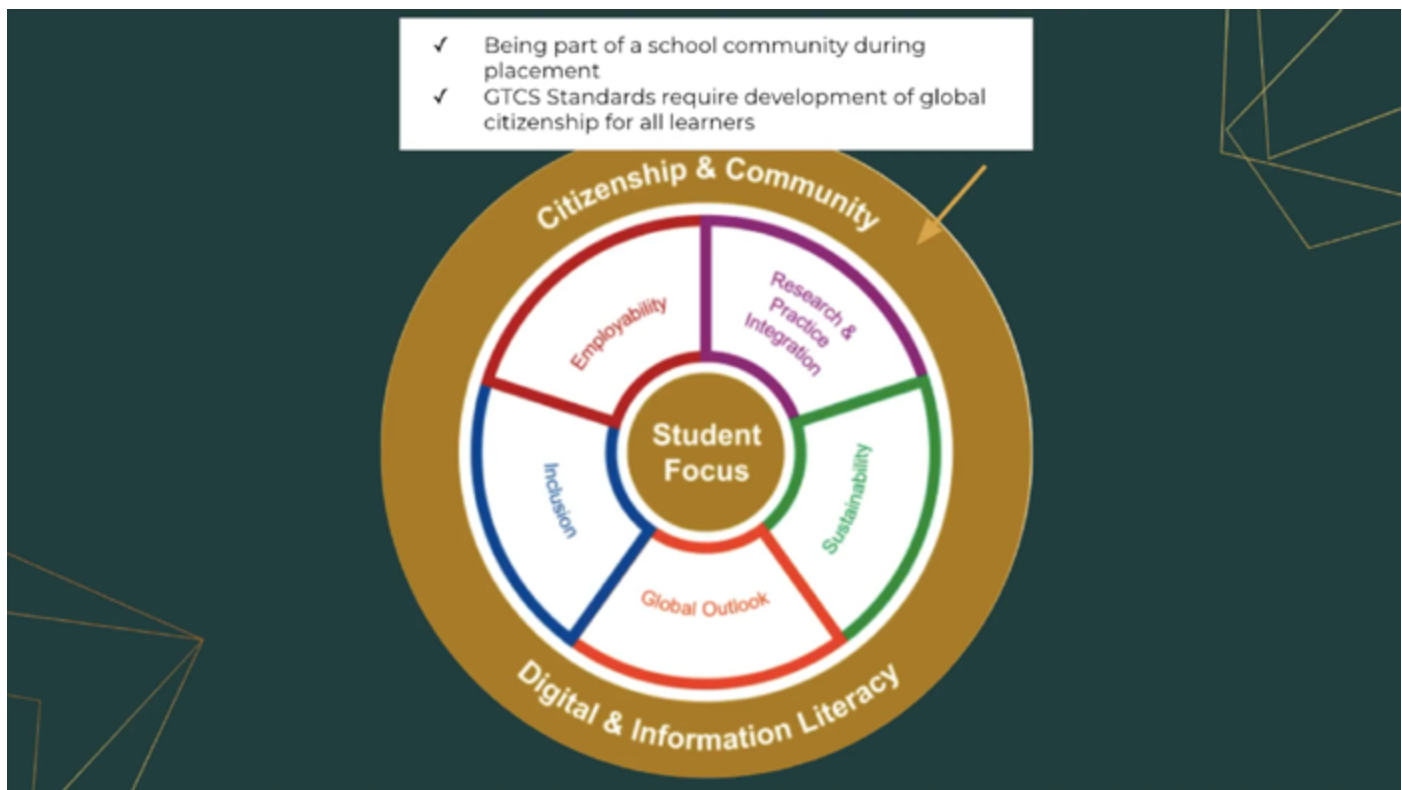
- ✓ Professional Enquiry links research to own practice during placement (3 opportunities for formative assessment)
- ✓ All teaching on PGDE programme research-informed and in-line with our expectations of students
- ✓ GTCS Standards require research-informed practice

Themes presented:

Employability; Research and Practice Integration; Sustainability; Inclusion



Digital & Information Literacy and Citizenship & Community





Further links